

HOVE PARK

1. London Plane: *Platanus x hispanica*: East Sussex champion: Best example of the so - called London Plane tree, in Brighton.



HOVE RECREATION GROUND

2. Elm : *Ulmus laevis* var. *parvifolia* British Isles champion. North east side

3. Elm: *Ulmus glabra* 'Cochlea'. World champion. Tallest & largest tree of its type. Opp. No. 15 Shirley Drive



4. Elm: *Ulmus glabra* 'Macrophylla.' British Isles champion. North side

5. Elm : *Ulmus x hollandica* 'Piteursii.' World champion: Insignificant looking tree but largest of its type for height & girth in the world. West side

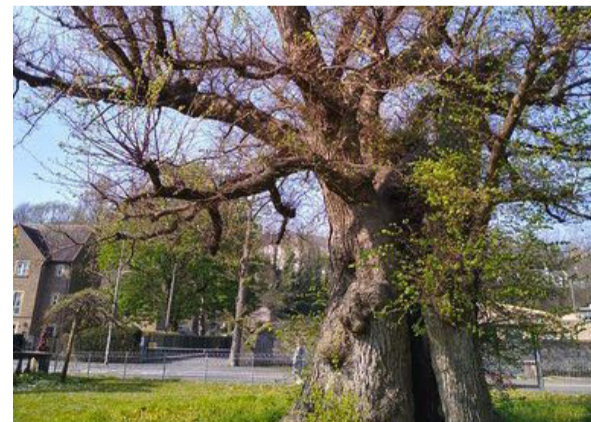
NEAR HOVE RECREATION GROUND

6. Elm: *Ulmus minor* Hoersholmensis. World champion. Tallest and largest tree of its type. Old Shoreham Road opp no 54 Radinden Manor Road junc.

7. Downton Elm: *Ulmus x hollandica* 'Smithii' European champion. One of only six trees known in the world; Eaton Road, Eaton Lodge

PRESTON PARK

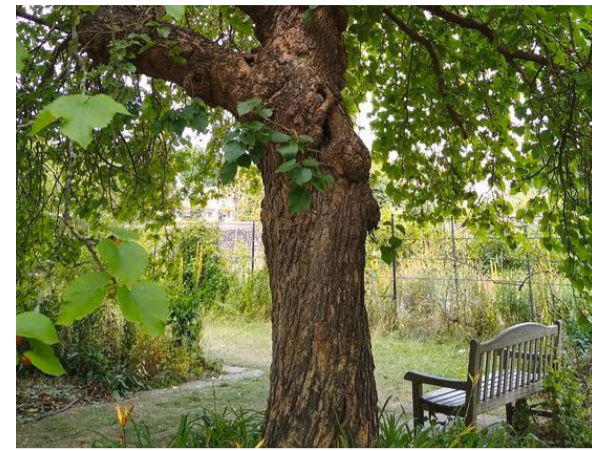
8. Elm: *Ulmus minor* 'Atinia.' Ancient hollow elm more than 400 years old; one of the largest and oldest elms in Europe. European Champion. Its twin felled in 2020 after becoming diseased. Preston Park Coronation garden



9. Elm: *Ulmus glabra* 'Camperdownii.' Preston Park Coronation garden

10. Elm: *Ulmus minor* 28 British Isles champion. The Gallop Copse south of the clock tower

11. Black mulberry: *Morus nigra* East Sussex champion; luscious abundant berries. Preston Park walled garden

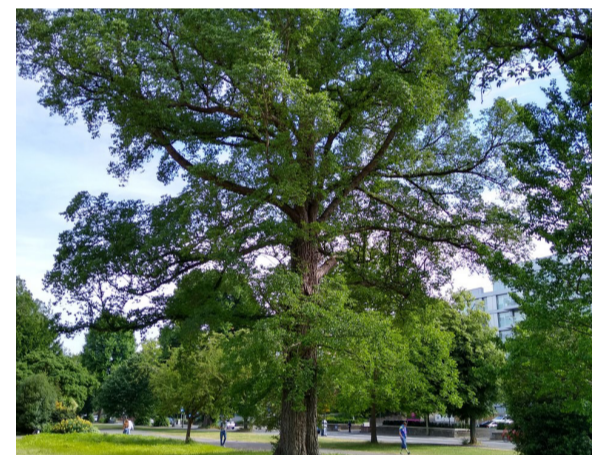


12. English oak: *Quercus robur*. North west of tennis courts

13. Paperbark Acer: *Acer griseum*; attractive deep reddish brown peeling bark. East Sussex champion. west side



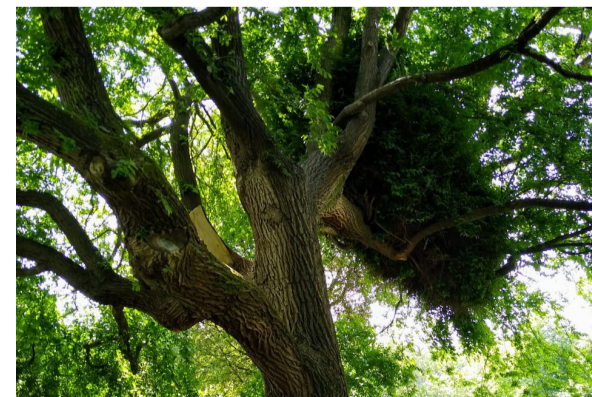
14. Elm: *Ulmus* Wheatley. One of a row of elms planted circa 1880. 34m high. Several lost to Dutch elm disease. West side



15. Indian Bean: *Catalpa bignonioides*. Long seed pods and stunning white trumpet-like flowers. Preston Park Coronation garden



16. Elm: *Ulmus* Den Haag. Planted 1953 for Queen's coronation. British Isles champion. Has an extreme example of virus deformity 'witch's broom'. Preston Park Coronation garden



17. Tulip Tree: *Liriodendron tulipifera* Preston Park Rockery

NEAR PRESTON PARK

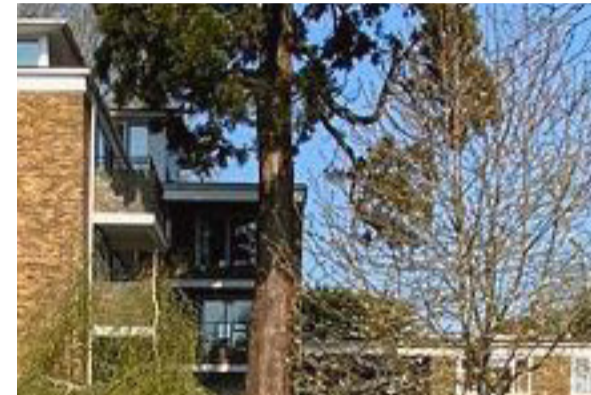
18. Horse Chestnut: *Aesculus hippocastanum*: Local landmark edge of park. London road approach into Brighton

19. Silver Lime: *Tomentosa* 'Petiolaris ' East Sussex Champion Oak Close

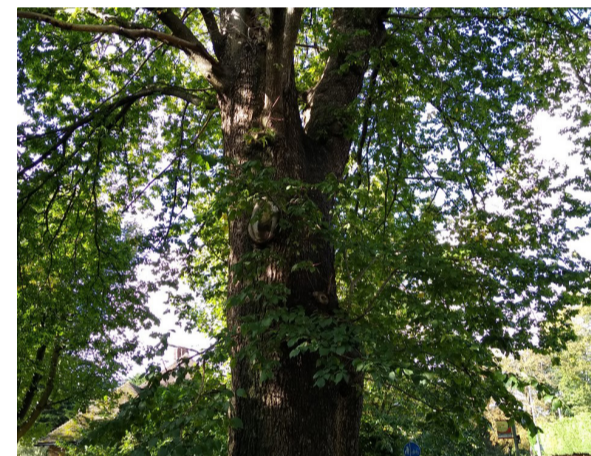
20. Amur Cork: *Phellodendron amurense*. East Sussex champion Oak Close

21. Tulip Tree: *Liriodendron tulipifera*. Tallest of its kind in Brighton

22. Wellingtonia: Giant Redwood. *Sequoiadendron giganteum*. Planted 1850. Tallest of its kind in Brighton. Vardean Park estate



23. Elm: *Ulmus x hollandica* major. British Isles champion. Tallest & largest tree of its type. London Road junc. with Cedar gardens



24. Elm: *Ulmus minor* 'Virgata.' European champion tallest & largest tree of its type, opp. 175 Surrenden Road, north Friar Close



25. Elm: *Ulmus minor* 'Rubescens' Tallest & largest tree of its type known in world. 21 Dyke Rd Drive



27. Elm: *Ulmus x hollandica* 'Wredi.' British Isles champion. South side of tennis courts



28. *Ulmus minor* 'Alksuth.' Tallest & largest tree of its type known in British Isles. Near 51 Stanford Ave

PATCHAM PEACE GARDENS

29. Silver Birch: *Betula pendula*. Known locally as the Anne Frank tree. Planted 1998 by local residents

30. Yunnan Crab: *Malus yunnanensis*. East Sussex champion from Yunnan province of China

WOODVALE CEMETERY

31. Weeping elm: 'Scampstonensis' planted 1851. World champion, only example of its type known in the world

32. Copper Beech: *Fagus sylvatica* f. *purpurea*

33. Elm: *Ulmus* 'Lombarsii' World champion, only example of its type known in the world. Brighton Cemetery entrance Hartington road



34. Raywood Ash: *Fraxinus*. East Sussex champion. Dinapore House garden John Street, corner of Albion Hill

35. Elm: *Ulmus minor* 'Microphylla Pendula.' Tallest & largest tree of its type in world. St Helen's road, near No.6

ROYAL PAVILION GARDENS

36. Weeping Wych Elm: *Ulmus glabra* 'Horizontalis.' Planted 1897. Most photographed tree in the city. East Sussex champion. Royal Pavilion Gardens



37. English Elm: *Ulmus procera*. Oldest elm in the Pavilion gardens. Sketched by landscape designer, Humphry Repton



38. *Ulmus procera*. The Royal Pavilion Elm: One of the Great Trees of Britain. Superb example of an English elm

39. Pride of India. Golden Rain tree. *Kolreuteria paniculata*. Adjacent to the Corn Exchange.



NEAR PAVILION GARDENS

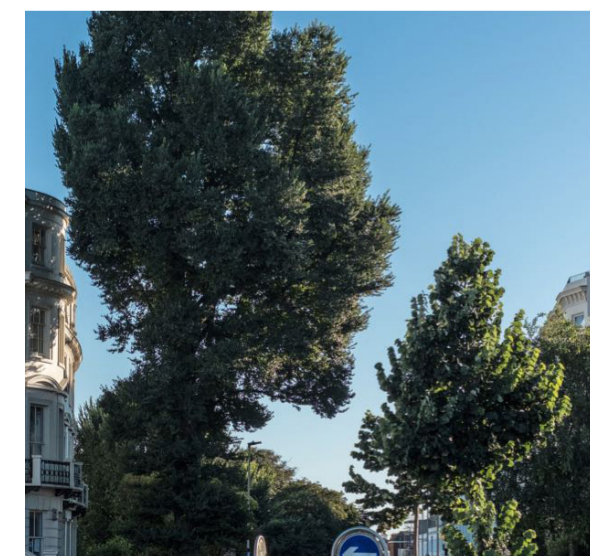
40. Ohio Buckeye: *Aesculus glabra*. East Sussex champion in the garden of Brighton's well known community centre, Brighthelm gardens, Queens Road

41. Service Tree of Fontainebleau: *Sorbus latifolia*. East Sussex champion. St Nicholas Rest Garden

42. Holm Oak: *Quercus ilex*. Montpellier crescent. Beautiful and much loved evergreen oak dominates one of Brighton's famous landmarks



43. Elm: Wheatley Elm. Local campaign saved this tree in 2013 when it was threatened with felling as part of a new road layout. Seven Dials



STANMER

44. Yew: *Taxus baccata*. Classified as an 'historic' tree. Believed to be the oldest tree in Brighton. Hollow trunk. Stanmer churchyard



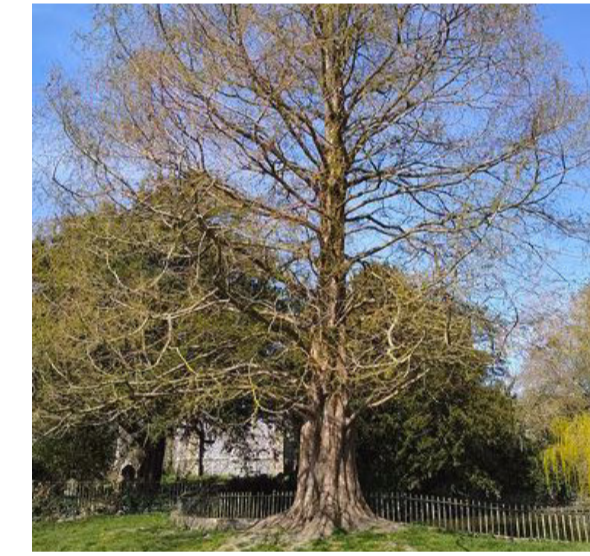
45. Judas tree : *Cercis siliquastrum*. Planted in Stanmer Park churchyard after the 1987 great storm. Spectacular in spring

46. Caucasian Wingnut: *Pterocarya fraxinifolia*. Planted 1965 by Stanmer resident and Brighton tree expert, John Gapper

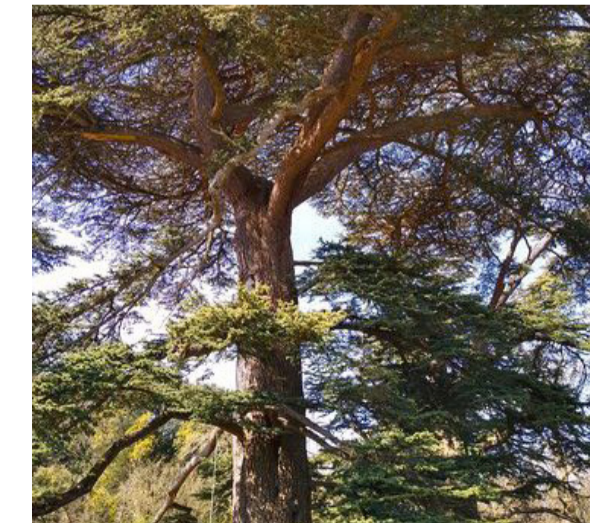


47. Common Box: *Buxus Sempervirens* tallest in East Sussex. Stanmer Park churchyard

48. Dawn Redwood: *Metasequoia glyptostroboides*. Planted 1965 near the pond by Stanmer resident and Brighton tree expert, John Gapper.



49. Lebanese Cedar: *Cedrus Libani* East Sussex champion. Best of three trees on the sloping lawn at the back of Stanmer House

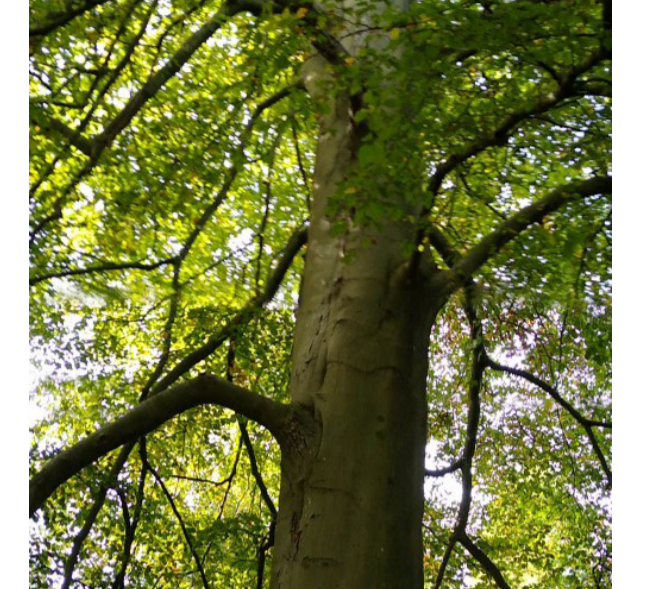


50. Common Lime: *Tilia x europaea*. East Sussex champion. Tallest lime in East Sussex, approach road to Stanmer House

51. Common Larch: *Larix decidua*

52. Betula mandschurica: Manchurian Birch. East Sussex champion for height

53. Common Beech: *Fagus sylvatica*. One of an avenue of beeches planted 300 years ago.



54. Lawson Cypress: *Lawsonia Chamaecyparis*

55. Monkey Puzzle: *Araucaria araucana*

56. Turkey Oak *Quercus cerris* 30m+ tallest oak in Brighton



57. Elm: *Ulmus minor x pumila*. British Isles champion

58. Elm: *Ulmus* 'Sapporo Autumn Gold.' Planted 1983

NEAR STANMER PARK

59. Elm: *Ulmus x hollandica* 'Jaqueline Hillier' Tallest tree of its type known in British Isles. Craven Road by side of Flats 133-143



60. Elm: *Ulmus* '260' The Highway, North green, Lewes road. opp. No.106

This map will be developed with more trees. If you spot errors or have suggestions for trees, let us know. brightonspecialtrees@gmail.com

To view all trees visit - <https://tictl.me/Brighton/headlines/13814/view>

Thanks to elm tree expert & Brighton resident, Peter Bourne.

Designed by Rob Newmarch
Instagram - @Rob.Newmarch

Printed on recycled paper

SPECIAL TREES OF BRIGHTON AND HOVE

Supported By



Brighton & Hove
City Council



BRIGHTON & HOVE
GREEN SPACES FORUM

We all love trees. They grace our streets, parks and gardens and yet few of us pay much attention to them only noticing them when they have gone: blown down in a storm or cut down because they are riddled with disease.

This map is a snapshot of Brighton and Hove's special trees. They are special because of their great age, their rarity, their beauty and their historical interest. Many of them have been awarded champion status because of their height and girth in the Tree Register, a database of more than 150,000 trees in Britain and Ireland.

Most of the trees shown here are varieties of Brighton's iconic tree – the elm, planted by the Georgians and Victorians who knew they would thrive in Brighton's chalk soil and salty winds. Amazingly there are 125 different types of elms in the city, more than any city in the world. They are so special that in 1998 the city was awarded the National Elm Collection by Plant Heritage in recognition of the work done to save elms from the ravages of Dutch elm disease and the diversity of the elm population.

Some of our elms were thought to be extinct but recently, with the help of on-line data, elms which are no longer found anywhere else in the world have been discovered thriving here. Brighton and Hove is much better known for its beaches than its trees, but they are the city's remarkable secret and you can use this map to find the special ones. There are 60 trees for residents and visitors to hunt down and then enjoy, admire and celebrate. As we learn to appreciate them more and more we can ensure they are protected for future generations

Vivienne Barton

